



Teaching and Learning

Update Fall 2019

every student, every day



every student, every day

TEACHING AND LEARNING



CURRICULUM & INSTRUCTION

- Professional Development
- Teacher Leadership



Brian Rhode

DATA & ACCOUNTABILITY

- Evidence-informed Instruction



**Kristin Card
Doug Cramer**

TECHNOLOGY INTEGRATION

- Instructional Support



**Lynn Burdick
Melissa Weatherwax**

SPECIAL ED & STUDENT SUPPORT

- Response to Intervention



**Kate Dorgan
Kara Herrington**

every student, every day

CENTER FOR TEACHING AND LEARNING: ROOM 308



Professional
Development

Brian Rhode

Data & Accountability

**Kristin Card &
Doug Cramer**

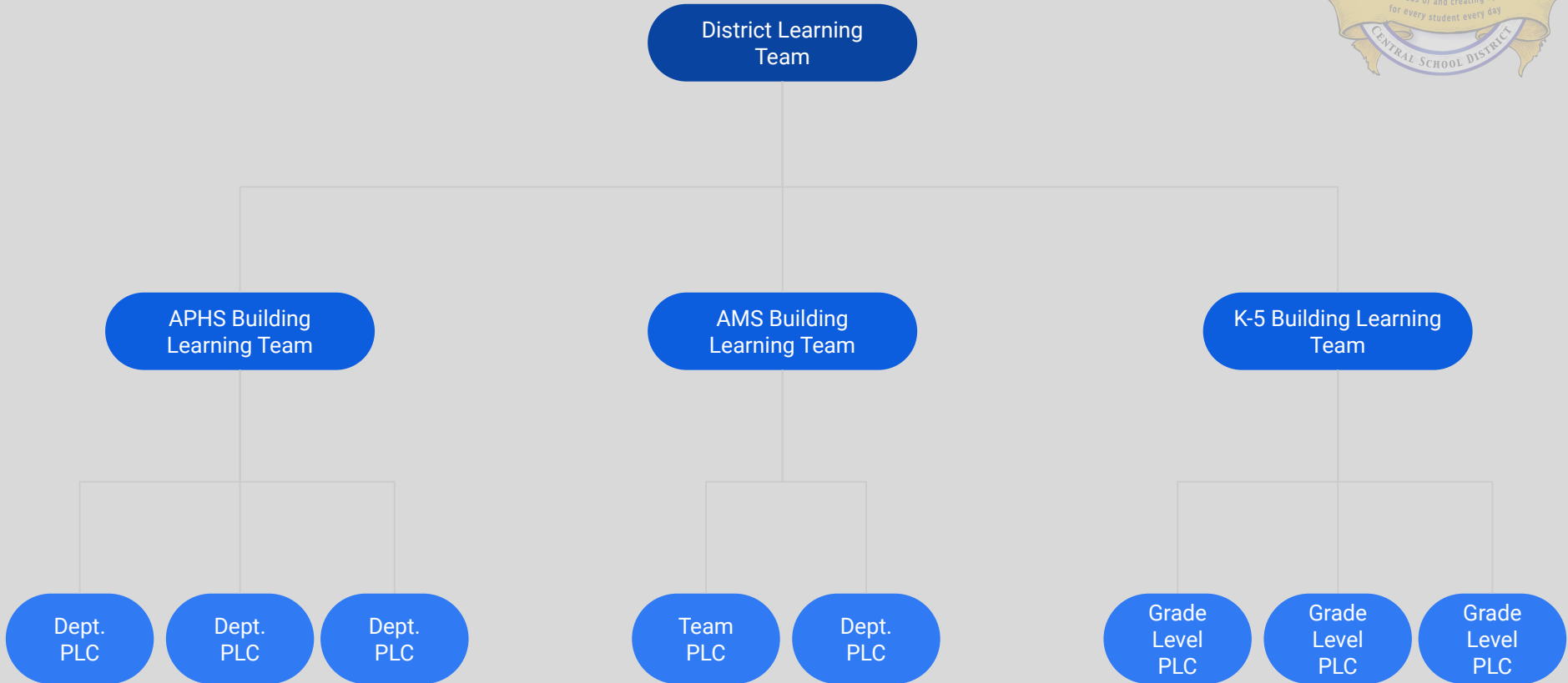
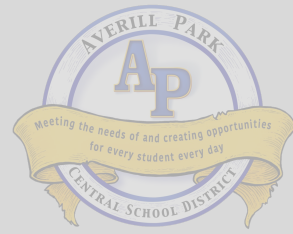
Technology
Integration

Melissa Weatherwax



every student, every day

TEACHER LEADERSHIP



every student, every day

TEACHER LEADERSHIP: DISTRICT LEARNING TEAM (DLT)

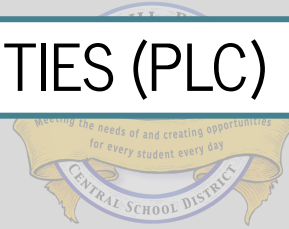


- Two-day summer workshop
- Monthly Meetings
- Focused on:
 - Leading their department/grade level/team as a professional learning community (PLC)
 - Working as a Building Learning Team (BLT) to develop objectives and action steps to support district goals
 - Topics of meetings have included:
 - Teacher Leadership
 - Structure of a Professional Learning Community (norms, agenda)
 - Developing SMART objectives
 - Data Inquiry Cycle
 - Professional Development needs



every student, every day

TEACHER LEADERSHIP: PROFESSIONAL LEARNING COMMUNITIES (PLC)



What is it we expect our students to learn?

How will we know when they have learned it?

How will we respond when they don't learn?

How will we respond when they already know it?

every student, every day

TEACHING AND LEARNING



CURRICULUM & INSTRUCTION

- Professional Development
- Teacher Leadership



Brian Rhode

DATA & ACCOUNTABILITY

- Evidence-informed Instruction



**Kristin Card
Doug Cramer**

TECHNOLOGY INTEGRATION

- Instructional Support



**Lynn Burdick
Melissa Weatherwax**

SPECIAL ED & STUDENT SUPPORT

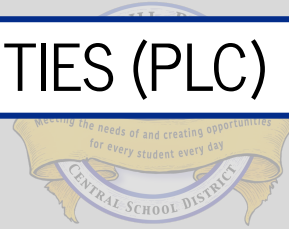
- Response to Intervention



**Kate Dorgan
Kara Herrington**

every student, every day

TEACHER LEADERSHIP: PROFESSIONAL LEARNING COMMUNITIES (PLC)



What is it we expect our students to learn?

How will we know when they have learned it?

How will we respond when they don't learn?

How will we respond when they already know it?

every student, every day

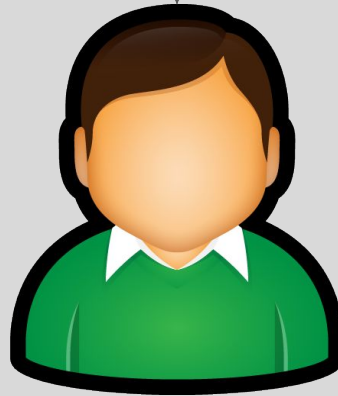
TEACHER LEADERSHIP: DLT, BLT, PLC



District Goals (DLT)

Objectives (BLT)

Action Steps (PLC)



every student, every day

PROFESSIONAL DEVELOPMENT



Social-Emotional
Learning/Wellness



Instructional
Technology

Differentiated Learning

every student, every day

PROFESSIONAL DEVELOPMENT



THE READING LEAGUE
ADVANCING EVIDENCE IN PRACTICE

every student, every day

TECHNOLOGY INTEGRATION

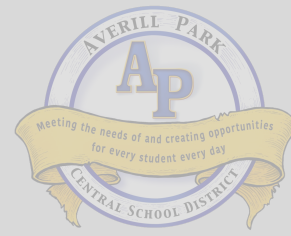


FUTURE READY
SCHOOLS  **»»**
PREPARING STUDENTS FOR SUCCESS



every student, every day

STUDENT SUPPORT SERVICES



K-5	Miller Hill, Poestenkill, West Sand Lake	<ul style="list-style-type: none">• Continue to improve our delivery of Tier 1, 2, 3 interventions• Use of 95% group for reading improvement• Modify our monitoring of student literacy
AMS	Algonquin Middle School	<ul style="list-style-type: none">• Continue our work with the Technical Assistance Center• Focus on Social-Emotional Learning
APHS	Averill Park High School	<ul style="list-style-type: none">• Stronger emphasis on interventions for students• Utilizing content-area teachers to support

every student, every day



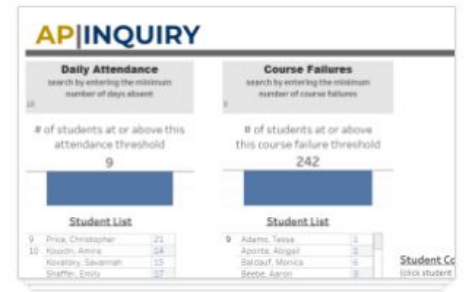
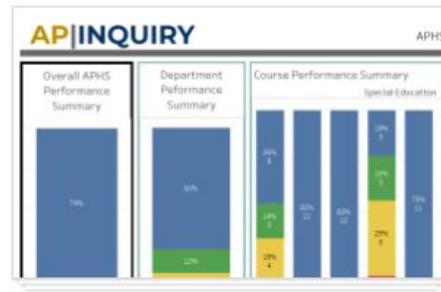
Learner-centered, evidence-informed

every student, every day

DATA AND ACCOUNTABILITY



AP|INQUIRY



every student, every day



We need to make the
positive so loud that the
negative becomes almost
impossible to hear.

George Couros

every student, every day